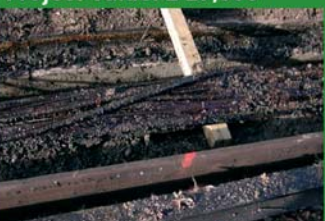




RAW

Backfilling excavation with bentonite

Project Value: £ 27,000



Impacted signal & telemetry cables

Client:
Rail Infrastructure Provider

Project Success:

- A pragmatic and fast response prevented contamination of a major drinking water resource
- Rapid response prevented impact to off-site receptors
- Appropriate spill management saved excessive remediation costs
- Potential very costly liability claims were avoided
- Effective project management avoided a major pollution incident

www.raw-group.com

6,000 Litre Spill of Rail De-Icer

De-icing agent in the cable pit

Background

6,000 litres of (oil based) rail de-icing agent were discharged to ground in a railway siding impacting a drinking water collection adit bored through the underlying Chalk aquifer. RAW investigated the spill before organising, supervising and project managing the clean-up operation that cost in excess of £500,000.

RAW completed the following works:

- An initial desk study and an intrusive site investigation that identified a high risk posed to drinking water supplies
- RAW advised the client of the potential liabilities arising from the spill incident
- RAW worked in partnership with the rail contractors that were employed to perform the physical excavation and removal of contaminated soils
- The clean-up works were supervised and validated by RAW
- The works were completed to the satisfaction of the rail operator with minimal disruption to the operation and to the satisfaction of the Environment Agency

UK: 0845 166 8491 • Ireland: 1850 616616